

ISLAND ESTATE  
LANAI



*Tommy Bahama*<sup>®</sup>  
OUTDOOR LIVING



# Tommy Bahama®

## OUTDOOR LIVING

### ISLAND ESTATE LANAI

Outdoor Living today has become a natural extension of your indoor space. Tommy Bahama, the number one name in casual living, offers designs across a wide range of styles. The finest materials, meticulous craftsmanship, and custom options allow you to create an environment that is uniquely yours.

Choose from 175 performance fabrics with the same soft hand, rich colors and vibrant patterns as indoor upholstery – complete with trims, fringes and designer options. Our proprietary Weatherguard™ cushions are both weather resistant and ultra-comfortable. Every item is hand crafted, with artisan finishes that will dare you to distinguish outdoor designs from fine indoor furniture.

Island Estate Lanai celebrates the natural beauty and classic look of woven wicker, with intricate patterns that draw the eye and invite the touch. The all-weather synthetic wicker is custom designed for Tommy Bahama, blending exclusive colors and styles. It is hand-woven into elegant patterns that give the collection its refined yet casual look. Island Estate Lanai is the largest of the Outdoor Living collections with a myriad of options for creating the outdoor oasis of your dreams.





**3170-954**  
Lanai Tray End Table  
23.25 dia. x 23.5H in.

**3170-33**  
Lanai Sofa Frame Only  
87W x 39D x 36.5H in.

**CS3170-33B**  
Lanai Boxed Edge Sofa  
Cushion Set

**3170-44ST**  
Lanai Storage Ottoman  
Frame Only  
48 dia. x 21H in.

**CS3170-44ST**  
Lanai Storage Ottoman  
Cushion

**3170-11SW**  
Lanai  
Swivel Lounge Chair  
Frame Only  
31.5W x 39D x 36.5H in.

**CS3170-11SW**  
Lanai  
Swivel Lounge Chair  
Cushion Set





**3170-44ST**  
Lanai Storage Ottoman  
Frame Only  
48 dia. x 21H in.

**CS3170-44ST**  
Lanai Storage Ottoman  
Cushion



Opposite:  
**3170-75**  
Lanai Chaise Lounge  
Frame Only  
32W x 81D x 36.5H in.

**CS3170-75**  
Lanai Chaise Lounge  
Cushion Set  
Optional Throw Pillow shown





**3170-11SW**  
Lanai  
Swivel Lounge Chair  
Frame Only  
31.5W x 39D x 36.5H in.

**CS3170-11SW**  
Lanai  
Swivel Lounge Chair  
Cushion Set

Opposite:  
**3170-11**  
Lanai Lounge Chair  
Frame Only  
31.5W x 39D x 36.5H in.  
**CS3170-11**  
Lanai Lounge Chair  
Cushion Set  
Standard 18" Throw Pillow  
not shown

**3170-44**  
Lanai Ottoman  
Frame Only  
27.5W x 23D x 17.5H in.  
**CS3170-44**  
Lanai Ottoman Cushion  
**3170-954**  
Lanai Tray End Table  
23.25 dia. x 23.5H in.





**3170-10**  
**Lanai Wing Chair Frame**  
**Only**  
 33W x 41D x 44H in.  
**CS3170-10**  
**Lanai Wing Chair**  
**Cushion Set**  
 Optional Throw Pillow shown



**3170-954**  
**Lanai Tray End Table**  
 23.25 dia. x 23.5H in.

*The Lanai shelter back chair is a signature item in the collection. It showcases intricate weaves of all-weather rattan and graceful lines from every angle. The seating comfort is without equal. The chairs work elegantly in pairs, or in a grouping or four around a fire pit as shown on the catalog cover.*





**3170-33**  
Lanai Sofa Frame Only  
87W x 39D x 36.5H in.

**CS3170-33B**  
Lanai Boxed Edge Sofa  
Cushion Set

Optional Throw Pillow shown

**3170-954**  
Lanai Tray End Table  
23.25 dia. x 23.5H in.

**3170-11**  
Lanai Lounge Chair  
Frame Only  
31.5W x 39D x 36.5H in.

**CS3170-11**  
Lanai Lounge Chair  
Cushion Set

**3160-969**  
Veranda  
Trunk Cocktail Table  
49W x 29D x 19.25H in.

**3170-44**  
Lanai Ottoman Frame Only  
27.5W x 23D x 17.5H in.

**CS3170-44**  
Lanai Ottoman Cushion





**3170-33**  
Lanai Sofa Frame Only  
87W x 39D x 36.5H in.  
**CS3170-33B**  
Lanai Boxed Edge Sofa  
Cushion Set

**3170-945WT**  
Weatherstone™ Top  
54W x 30D x 1.5H in.  
**3170-945TB**  
Lanai Cocktail Table Base  
53W x 29.25D x 17.25H in.

**3170-11**  
Lanai Lounge Chair  
Frame Only  
31.5W x 39D x 36.5H in.  
**CS3170-11**  
Lanai Lounge Chair  
Cushion Set  
**3170-954**  
Lanai Tray End Table  
23.25 dia. x 23.5H in.

**3170-44**  
Lanai Ottoman  
Frame Only  
27.5W x 23D x 17.5H in.  
**CS3170-44**  
Lanai Ottoman Cushion  
Opposite:  
**3170-953**  
Lanai Accent Table  
26W x 26D x 22.75H in.





3170-954  
Lanai Tray End Table  
23.25 dia. x 23.5H in.

3170-33  
Lanai Sofa Frame Only  
87W x 39D x 36.5H in.

CS3170-33S  
Lanai Scatterback Sofa  
Cushion Set

3170-44ST  
Lanai Storage Ottoman  
Frame Only  
48 dia. x 21H in.

CS3170-44ST  
Lanai Storage Ottoman  
Cushion

3170-10  
Lanai Wing Chair  
Frame Only  
33W x 41D x 44H in.

CS3170-10  
Lanai Wing Chair  
Cushion Set





**3170-954**  
Lanai Tray End Table  
23.25 dia. x 23.5H in.

**3170-33**  
Lanai Sofa Frame Only  
87W x 39D x 36.5H in.

**CS3170-33S**  
Lanai Scatterback Sofa  
Cushion Set



*The hexagonal top and gentle concave sides on the Lanai fire pit offer the perfect configuration for comfortable conversation. The Weatherstone™ top has the look and texture of natural travertine with the durability to withstand the elements.*



**3170-920FG**  
Lanai Gas Fire Pit  
51W x 44D x 24.75H in.

**3170-10**  
Lanai Wing Chair  
Frame Only  
33W x 41D x 44H in.  
**CS3170-10**  
Lanai Wing Chair  
Cushion Set



Lanai dining options include both stationary and swivel rocker chairs. Shown here, the swivel rockers are a great choice for the host and hostess configuration. The plush seat cushions are removable, and the shaping in the chair backs ensures exceptional comfort.



**3160-876WT**  
Weatherstone™ Top  
84W x 44D x 1.5H in.  
**3170-876TB**  
Lanai Table Bases  
for 84 inch Dining Table  
(two -870TB)  
22.75W x 22.75D x 27.25H in. each

**3170-13**  
Lanai Dining Chair  
Frame Only  
25.5W x 28.5D x 40.5H in.  
**CS3170-13**  
Lanai Dining Chair  
Cushion

**3170-13SR**  
Lanai Swivel Rocker  
Dining Chair  
Frame Only  
25.5W x 28.5D x 40.5H in.  
**CS3170-13SR**  
Lanai Swivel Rocker  
Dining Chair  
Cushion





**3170-13SR**  
Lanai Swivel Rocker  
Dining Chair  
Frame Only  
25.5W x 28.5D x 40.5H in.

**CS3170-13SR**  
Lanai Swivel Rocker  
Dining Chair  
Cushion

**3170-13**  
Lanai Dining Chair  
Frame Only  
25.5W x 28.5D x 40.5H in.

**CS3170-13**  
Lanai Dining Chair  
Cushion

**3160-876WT**  
Weatherstone™ Top  
84W x 44D x 1.5H in.

**3170-876TB**  
Lanai Table Bases  
for 84 inch Dining Table  
(two -870TB)  
22.75W x 22.75D x 27.25H in. each



*The Lanai bistro table comes with an elegantly designed spacer section that attaches below the top, raising the table height by 6". This accommodates your choice of bar or counter stools. For settings on balconies where railings often obstruct the view, this option provides an ideal solution.*



**3170-16SW**  
Lanai Swivel Bar Stool  
Frame Only  
23.5W x 25D x 48H in.

**CS3170-16SW**  
Lanai Swivel Bar Stool  
Cushion



**3170-17SW**  
Lanai Swivel Counter Stool  
Frame Only  
23.5W x 25D x 42.5H in.

**CS3170-17SW**  
Lanai Swivel Counter Stool  
Cushion



Opposite:  
**3160-873WT**  
Weatherstone™ Top  
38 dia. x 1.5H in.

**3170-873BB**  
Lanai High/Low  
Bistro Table Base  
21W x 21D x 36-42H in.



Tommy Bahama branded umbrellas are offered in seven colors. Handle cranks and umbrella bases are custom cast with the Tommy Bahama logo. The complete assortment is shown in the details section of this catalog.



**3160-870WT**  
Weatherstone™ Top  
54 dia. x 1.5H in.

**3170-870TB**  
Lanai Table Base  
for 54 inch Dining Table  
22.75W x 22.75D x 27.25H in.

**3170-13**  
Lanai Dining Chair  
Frame Only  
25.5W x 28.5D x 40.5H in.

**CS3170-13**  
Lanai Dining Chair  
Cushion

**3170-13SR**  
Lanai Swivel Rocker  
Dining Chair  
Frame Only  
25.5W x 28.5D x 40.5H in.

**CS3170-13SR**  
Lanai Swivel Rocker  
Dining Chair  
Cushion

**3100-793**  
Tommy Bahama  
Signature Umbrella  
11 ft. dia. x 8 ft. 9 in. H

**3100-35CUB**  
Tommy Bahama  
Cast Aluminum Umbrella Base  
18 in. dia. x 21H in.

The Lanai bar offers an ideal solution for flexible entertaining. It is fully self-contained and highly functional, with a storage drawer and lockable beverage locker on the left with two adjustable shelves. The right side features ample open storage. The serving height accommodates counter stools, and tops are available in your choice of Weatherstone or natural travertine and marble.



3170-945WT  
Weatherstone™ Top  
54W x 30D x 1.5H in.

3170-960BB  
Lanai Base for Bar  
47.5W x 19.5D x 34.5H in.

3170-17SW  
Lanai Swivel Counter Stool  
Frame Only  
23.5W x 25D x 42.5H in.

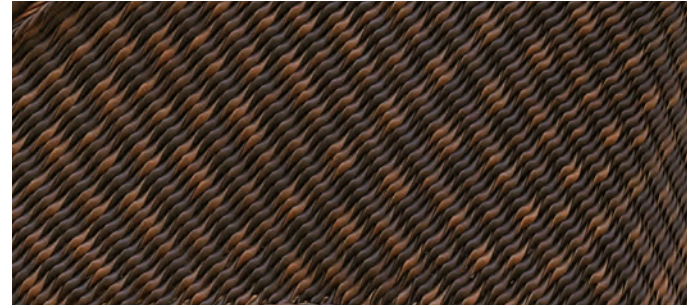
CS3170-17SW  
Lanai Swivel Counter Stool  
Cushion



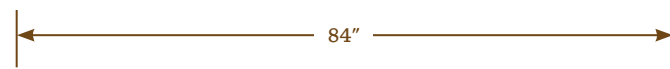
## DETAILS

### FINISH

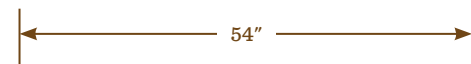
Island Estate Lanai is finished in a golden bamboo coloration with hand burnishing. The all-weather woven rattan is finished in a rich tobacco coloration.



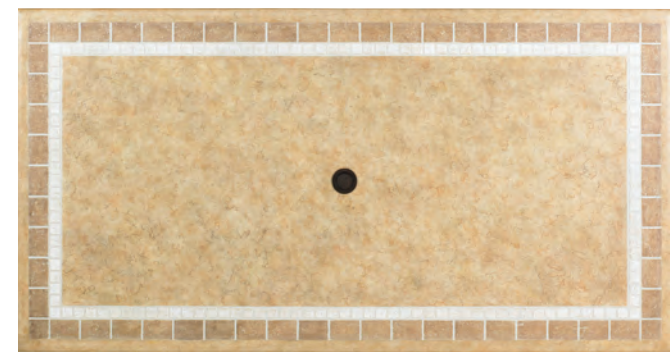
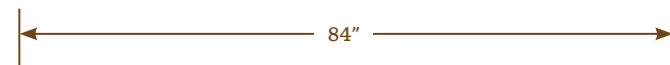
## DINING TABLE TOP CONFIGURATIONS



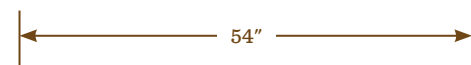
**3160-876ST**  
Travertine and Marble Top  
84W x 44D x 1.5H in.



**3160-870ST**  
Travertine and Marble Top  
54 dia. x 1.5H in.



**3160-876WT**  
Weatherstone™ Top  
84W x 44D x 1.5H in.



**3160-870WT**  
Weatherstone™ Top  
54 dia. x 1.5H in.

## UMBRELLAS AND UMBRELLA STAND



**3100-610**  
Tommy Bahama  
Signature  
Umbrella  
11 ft. dia. x 8 ft. 9 in. H  
Pole type and color:  
2 inch, one piece wooden pole  
Fabric number and color:  
7404-15, canvas;  
dark brown logo



**3100-645**  
Tommy Bahama  
Signature Umbrella  
11 ft. dia. x 8 ft. 9 in. H  
Pole type and color:  
2 piece, auto-tilt,  
aluminum bronze pole  
Fabric number and color:  
7404-17, antique beige;  
dark brown logo



**3100-674**  
Tommy Bahama  
Signature Umbrella  
11 ft. dia. x 8 ft. 9 in. H  
Pole type and color:  
2 piece, auto-tilt,  
aluminum bronze pole  
Fabric number and color:  
7404-41, wheat;  
dark brown logo



**3100-702**  
Tommy Bahama  
Signature Umbrella  
11 ft. dia. x 8 ft. 9 in. H  
Pole type and color:  
2 piece, auto-tilt,  
aluminum bronze pole  
Fabric number and color:  
7404-71, cork;  
dark brown logo



**3100-733**  
Tommy Bahama  
Signature Umbrella  
11 ft. dia. x 8 ft. 9 in. H  
Pole type and color:  
2 piece, auto-tilt,  
aluminum bronze pole  
Fabric number and color:  
7404-75, black;  
white logo



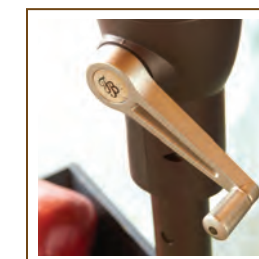
**3100-765**  
Tommy Bahama  
Signature Umbrella  
11 ft. dia. x 8 ft. 9 in. H  
Pole type and color:  
2 piece, auto-tilt,  
aluminum bronze pole  
Fabric number and color:  
7404-21, ginkgo;  
white logo



**3100-793**  
Tommy Bahama  
Signature Umbrella  
11 ft. dia. x 8 ft. 9 in. H  
Pole type and color:  
2 piece, auto-tilt,  
aluminum bronze pole  
Fabric number and color:  
7408-31, neptune;  
white logo



**3100-35CUB**  
Tommy Bahama  
Cast Aluminum  
Umbrella Base  
18 in. dia. x 21H in.



**3100-UBWT**  
Extra Ballast Weight  
30 pounds; not shown

Umbrella canopies are 11-foot diameter and double wind vented.

\* Canopies have two silk screened Tommy Bahama logos (shown above) and one color ink as noted.

\* The extra ballast weight is for stability against winds, but is not required for use with umbrella stand.

All aluminum umbrellas are auto-tilt and have the distinctive scripted TB monogram on the crank handle.



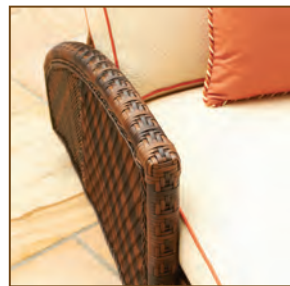
The Final Touches program is a collection of options that can be selected to create your custom outdoor upholstery at NO CHARGE.

Simply choose your seat fabric to determine the graded price, then select any combination of the following options to create your unique custom outdoor upholstery:



**Contrast with FABRIC....using any fabric Grades A-B-C-D-E**

- on both sides of standard throw or kidney pillows
- on one side of standard throw or kidney pillows
- on back cushions (where standard)
- on kidney pillow borders



**Contrast with WELT....using any fabric Grades A-B-C-D-E**

- on standard throw or kidney pillows
- on back cushions
- on seat cushions



**Contrast with TRIM....on standard throw or kidney pillows**

- add outdoor decorative fringe
- add outdoor decorative cord

Your choice...no charge. Final Touches No Charge Options applies to all custom outdoor upholstery frames. When using a seat fabric in Grades F-G-H, contrasting fabrics and welts at the same grade or below are included in the base price. However, if the seat fabric is Grades A-B-C-D-E, contrasting fabrics and welts in F-G-H require an upcharge. See dealer for pricing.

**ADDITIONAL DECORATIVE PILLOWS**



**8881-18  
Throw Pillow**  
18W x 18H in.  
If contrast welt is not specified, self-welt will be applied.  
Contrast welt available at upcharge. Fringe or cord available at upcharge.  
Dual fabrics are priced at a higher grade.  
Available fabric grades: A, COM, B, C, D, E, F, G, H.  
Contact a Tommy Bahama Outdoor dealer for further details.



**8881-20  
Throw Pillow**  
20W x 20H in.  
If contrast welt is not specified, self-welt will be applied.  
Contrast welt available at upcharge. Fringe or cord available at upcharge.  
Dual fabrics are priced at a higher grade.  
Available fabric grades: A, COM, B, C, D, E, F, G, H.  
Contact a Tommy Bahama Outdoor dealer for further details.



**8881-22  
Throw Pillow**  
22W x 22H in.  
If contrast welt is not specified, self-welt will be applied.  
Contrast welt available at upcharge. Fringe or cord available at upcharge.  
Dual fabrics are priced at a higher grade.  
Available fabric grades: A, COM, B, C, D, E, F, G, H.  
Contact a Tommy Bahama Outdoor dealer for further details.



**8881-23  
Kidney Pillow**  
24W x 12H in.  
If contrast welt is not specified, self-welt will be applied.  
Contrast welt available at upcharge. Fringe or cord available at upcharge.  
Dual fabrics are priced at a higher grade.  
Available fabric grades: A, COM, B, C, D, E, F, G, H.  
Contact a Tommy Bahama Outdoor dealer for further details.



**8881-24  
Throw Pillow**  
24W x 24H in.  
If contrast welt is not specified, self-welt will be applied.  
Contrast welt available at upcharge. Fringe or cord available at upcharge.  
Dual fabrics are priced at a higher grade.  
Available fabric grades: A, COM, B, C, D, E, F, G, H.  
Contact a Tommy Bahama Outdoor dealer for further details.

NOTE: Pillow fill is 100% all-weather fiber with water resistant ticking that is thermally sealed to prevent water penetration.

# Paradise Pillows

Paradise Pillows feature signature Tommy Bahama designs to enhance any outdoor setting. They are available only as shown. The pillow fill is 100% all-weather fiber with a water resistant ticking that is thermally sealed to prevent water penetration. The same designs are utilized on coordinating Island Ottomans, meaning the AA designation has the same graphic design on the pillow face as the seat of the slipcover ottoman. The fabric on the pillow back matches the fabric on the welts and skirts of the ottoman.



**In The Drink**  
 8880-18AA 18W x 18H in.  
 8880-20AA 20W x 20H in.  
 8880-24AA 24W x 24H in.  
 Available only as shown:  
 Face 4500-61, Back 7409-11,  
 Welt 7404-41



**Anchor's Away**  
 8880-18BB 18W x 18H in.  
 8880-20BB 20W x 20H in.  
 8880-24BB 24W x 24H in.  
 Available only as shown:  
 Face 5000-61, Back 7408-31,  
 Welt 7408-31



**King Putt**  
 8880-18CC 18W x 18H in.  
 8880-20CC 20W x 20H in.  
 8880-24CC 24W x 24H in.  
 Available only as shown:  
 Face 5100-61, Back 7408-31,  
 Welt 7404-21



**Par & Bar**  
 8880-18KK 18W x 18H in.  
 8880-20KK 20W x 20H in.  
 8880-24KK 24W x 24H in.  
 Available only as shown:  
 Face 5600-11, Back 7409-11,  
 Welt 7404-41



**Par & Bar (Ocean)**  
 8880-18LL 18W x 18H in.  
 8880-20LL 20W x 20H in.  
 8880-24LL 24W x 24H in.  
 Available only as shown:  
 Face 5600-61, Back 7404-41,  
 Welt 7404-71



**Paradise Casino**  
 8880-18MM 18W x 18H in.  
 8880-20MM 20W x 20H in.  
 8880-24MM 24W x 24H in.  
 Available only as shown:  
 Face 5800-11, Back 7404-74,  
 Welt 7408-31



**King Putt (Sunbleach)**  
 8880-18DD 18W x 18H in.  
 8880-20DD 20W x 20H in.  
 8880-24DD 24W x 24H in.  
 Available only as shown:  
 Face 5100-41, Back 7408-31,  
 Welt 7404-21



**Long Weekend**  
 8880-18EE 18W x 18H in.  
 8880-20EE 20W x 20H in.  
 8880-24EE 24W x 24H in.  
 Available only as shown:  
 Face 5200-61, Back 7409-71,  
 Welt 7404-74



**Sail Fast**  
 8880-18FF 18W x 18H in.  
 8880-20FF 20W x 20H in.  
 8880-24FF 24W x 24H in.  
 Available only as shown:  
 Face 5300-61, Back 7408-31,  
 Welt 7404-75



**Paradise Casino (Fresco)**  
 8880-18NN 18W x 18H in.  
 8880-20NN 20W x 20H in.  
 8880-24NN 24W x 24H in.  
 Available only as shown:  
 Face 5800-61, Back 7404-72,  
 Welt 7408-31



**Kiwi**  
 8880-18PP 18W x 18H in.  
 8880-20PP 20W x 20H in.  
 8880-24PP 24W x 24H in.  
 Available only as shown:  
 Face 7613-21, Back 7404-21,  
 Welt 7404-21



**Cobalt**  
 8880-18QQ 18W x 18H in.  
 8880-20QQ 20W x 20H in.  
 8880-24QQ 24W x 24H in.  
 Available only as shown:  
 Face 7613-31, Back 7401-31,  
 Welt 7401-31



**Rum Fellas**  
 8880-18GG 18W x 18H in.  
 8880-20GG 20W x 20H in.  
 8880-24GG 24W x 24H in.  
 Available only as shown:  
 Face 5400-61, Back 7404-21,  
 Welt 7404-74



**Cigar Club**  
 8880-18HH 18W x 18H in.  
 8880-20HH 20W x 20H in.  
 8880-24HH 24W x 24H in.  
 Available only as shown:  
 Face 5500-11, Back 7404-41,  
 Welt 7404-75



**Cigar Club (Tobacco)**  
 8880-18JJ 18W x 18H in.  
 8880-20JJ 20W x 20H in.  
 8880-24JJ 24W x 24H in.  
 Available only as shown:  
 Face 5500-61, Back 7404-75,  
 Welt 7404-75



**Chocolate**  
 8880-18RR 18W x 18H in.  
 8880-20RR 20W x 20H in.  
 8880-24RR 24W x 24H in.  
 Available only as shown:  
 Face 7613-71, Back 7404-74,  
 Welt 7404-74



**Burgundy**  
 8880-18SS 18W x 18H in.  
 8880-20SS 20W x 20H in.  
 8880-24SS 24W x 24H in.  
 Available only as shown:  
 Face 7613-51, Back 7401-51,  
 Welt 7401-51

# Island Ottomans

Island Ottomans feature signature Tommy Bahama designs to enhance any outdoor setting. They are available only as shown. Frames are rustproof aluminum, on casters, covered with a padded surface. Slipcovers slide over that padded surface. Island Ottomans and Paradise Pillows coordinate, meaning the AA designation represents the same graphic design on the pillow and ottoman.



**8980-45AA**  
**In The Drink**  
 19W x 19D x 17H in.  
 Available only as shown:  
 Top 4500-61,  
 Sides 7409-11,  
 Welt 7404-41



**8980-45BB**  
**Anchor's Away**  
 19W x 19D x 17H in.  
 Available only as shown:  
 Top 5000-61,  
 Sides 7408-31,  
 Welt 7408-31



**8980-45CC**  
**King Putt**  
 19W x 19D x 17H in.  
 Available only as shown:  
 Top 5100-61,  
 Sides 7408-31,  
 Welt 7404-21



**8980-45KK**  
**Par & Bar**  
 19W x 19D x 17H in.  
 Available only as shown:  
 Top 5600-11,  
 Sides 7409-11,  
 Welt 7404-41



**8980-45LL**  
**Par & Bar (Ocean)**  
 19W x 19D x 17H in.  
 Available only as shown:  
 Top 5600-61,  
 Sides 7404-41,  
 Welt 7404-71



**8980-45MM**  
**Paradise Casino**  
 19W x 19D x 17H in.  
 Available only as shown:  
 Top 5800-11,  
 Sides 7404-74,  
 Welt 7408-31



**8980-45DD**  
**King Putt (Sunbleach)**  
 19W x 19D x 17H in.  
 Available only as shown:  
 Top 5100-41,  
 Sides 7408-31,  
 Welt 7404-21



**8980-45EE**  
**Long Weekend**  
 19W x 19D x 17H in.  
 Available only as shown:  
 Top 5200-61,  
 Sides 7409-71,  
 Welt 7404-74



**8980-45FF**  
**Sail Fast**  
 19W x 19D x 17H in.  
 Available only as shown:  
 Top 5300-61,  
 Sides 7408-31,  
 Welt 7404-75



**8980-45NN**  
**Paradise Casino (Fresco)**  
 19W x 19D x 17H in.  
 Available only as shown:  
 Top 5800-61,  
 Sides 7404-72,  
 Welt 7408-31



**8980-45PP**  
**Kiwi**  
 19W x 19D x 17H in.  
 Available only as shown:  
 Top 7613-21,  
 Sides 7404-21,  
 Welt 7404-21



**8980-45QQ**  
**Cobalt**  
 19W x 19D x 17H in.  
 Available only as shown:  
 Top 7613-31,  
 Sides 7401-31,  
 Welt 7401-31



**8980-45GG**  
**Rum Fellas**  
 19W x 19D x 17H in.  
 Available only as shown:  
 Top 5400-61,  
 Sides 7404-21,  
 Welt 7404-74



**8980-45HH**  
**Cigar Club**  
 19W x 19D x 17H in.  
 Available only as shown:  
 Top 5500-11,  
 Sides 7404-41,  
 Welt 7404-75



**8980-45JJ**  
**Cigar Club (Tobacco)**  
 19W x 19D x 17H in.  
 Available only as shown:  
 Top 5500-61,  
 Sides 7404-75,  
 Welt 7404-75



**8980-45RR**  
**Chocolate**  
 19W x 19D x 17H in.  
 Available only as shown:  
 Top 7613-71,  
 Sides 7404-74,  
 Welt 7404-74



**8980-45SS**  
**Burgundy**  
 19W x 19D x 17H in.  
 Available only as shown:  
 Top 7613-51,  
 Sides 7401-51,  
 Welt 7401-51



# VISUAL INDEX

## DEEP SEATING



**3170-10**  
**Lanai Wing Chair**  
**Frame Only**  
 33W x 41D x 44H in.  
 Arm: 25H in. Seat: 17.5H in.  
 Inside: 24W x 22.5D in.

**CS3170-10**  
**Lanai Wing Chair**  
**Cushion Set**  
 Standard Feature: One 27 x 12" Kidney Pillow  
 Shown in 7602-31 Gr. H, Welt on Seat and  
 Back Cushion in 7401-31 Gr. D  
 Optional Throw Pillow shown in 7501-31 Gr. F  
 with Fringe 400-31  
*Shown on Front Cover and Pages 3, 10 and 21*  
 Shown in 7602-41 Gr. H, Welt on Seat and  
 Back Cushion in 7401-71 Gr. D  
 Optional Throw Pillow shown in 7607-11 Gr. F  
 with Cord 500-41  
*Shown on Page 11*

Shown in 7632-21 Gr. H  
*Shown on Page 17*



**3170-11**  
**Lanai Lounge Chair**  
**Frame Only**  
 31.5W x 39D x 36.5H in.  
 Arm: 24.5H in. Seat: 17H in.  
 Inside: 23.5W x 25D in.

**CS3170-11**  
**Lanai Lounge Chair**  
**Cushion Set**  
 Standard Feature: One 18" Throw Pillow  
 Shown in 7605-31 Gr. H, Welt on Seat and  
 Back Cushion in 7401-31 Gr. D, one 18" Throw  
 Pillow in 7607-31 Gr. F with Fringe 400-31  
*Shown on Page 14*

Shown in 7600-41 Gr. F, Welt on Seat and  
 Back Cushion in 7400-41 Gr. E  
*Shown on Page 9*

Shown in 7500-41 Gr. F, Welt on Seat and  
 Back Cushion in 7401-41 Gr. D, one 18"  
 Throw Pillow in 7409-51 Gr. A  
*Shown on Page 13*



**3170-11SW**  
**Lanai Swivel Lounge Chair**  
**Frame Only**  
 31.5W x 39D x 36.5H in.  
 Arm: 24.5H in. Seat: 17H in.  
 Inside: 23.5W x 25D in.

**CS3170-11SW**  
**Lanai Swivel Lounge Chair**  
**Cushion Set**  
 Standard Feature: One 18" Throw Pillow  
 Shown in 7602-41 Gr. H, one 18" Throw Pillow  
 in 7503-41 Gr. F with Cord 500-41  
*Shown on Pages 5 and 8*



**3170-33**  
**Lanai Sofa**  
**Frame Only**  
 87W x 39D x 36.5H in.  
 Arm: 24.5H in. Seat: 17H in.  
 Inside: 79W x 25D in.

**CS3170-33B**  
**Lanai Boxed Edge Sofa**  
**Cushion Set**  
 Standard Features: Two 20" Throw Pillows,  
 two 18" Throw Pillows  
 Shown in 7505-11 Gr. G, Welt on Seat and  
 Back Cushions in 7401-31 Gr. D, two 20"  
 Throw Pillows in 7501-31 Gr. F with Cord  
 500-31, two 18" Throw Pillows in 7605-31  
 Gr. H with Fringe 400-31  
*Shown on Pages 14 and 15*

Shown in 7602-41 Gr. H, Welt on Seat and  
 Back Cushions in 7401-71 Gr. D, two 20"  
 Throw Pillows in 7503-41 Gr. F with Cord  
 500-41, two 18" Throw Pillows in 7607-11  
 Gr. F with Fringe 400-41  
*Shown on Page 4*

Shown in 7605-41 Gr. H, Welt on Seat and  
 Back Cushions in 7401-41 Gr. D, two 20"  
 Throw Pillows in 7409-51 Gr. A with Fringe  
 400-45, two 18" Throw Pillows in 7500-41  
 Gr. F with Cord 500-45  
 Optional Throw Pillow shown in 7607-41  
 Gr. F with Fringe 400-45  
*Shown on Pages 12 and 13*

Also available:  
**CS3170-33S Lanai**  
**Scatterback Sofa Cushion Set**  
 Standard Features: Five 24" Throw Pillows,  
 two 18" Throw Pillows  
 Shown in 7420-11 Gr. D, Welt on Seat  
 Cushions in 7405-21 Gr. B, three 24"  
 Throw Pillows in 7632-21 Gr. H with Fringe  
 400-21, two 22" Throw Pillows in 7405-21  
 Gr. B with Cord 500-21, two 18" Throw  
 Pillows in 7536-21 Gr. E with Cord 500-21  
*Shown on Pages 16, 17 and 19*

# VISUAL INDEX



**3170-44**  
Lanai Ottoman  
Frame Only  
27.5W x 23D x 17.5H in.

**CS3170-44**  
Lanai Ottoman  
Cushion  
Shown in 7605-31 Gr. H, Welt on Seat Cushion  
in 7401-31 Gr. D  
*Shown on Page 14*

Shown in 7600-41 Gr. F, Welt on Seat Cushion  
in 7400-41 Gr. E  
*Shown on Page 9*

Shown in 7500-41 Gr. F, Welt on Seat Cushion  
in 7401-41 Gr. D  
*Shown on Page 13*



**3170-44ST**  
Lanai Storage Ottoman  
Frame Only  
48 dia. x 21H in.

**CS3170-44ST**  
Lanai Storage Ottoman  
Cushion  
Shown in 7503-41 Gr. F, Welt on Seat Cushion  
in 7401-71 Gr. D  
*Shown on Pages 3, 5 and 6*

Shown in 7610-21 Gr. E, Welt on Seat Cushion  
in 7404-21 Gr. A  
*Shown on Page 17*



**3170-75**  
Lanai Chaise Lounge  
Frame Only  
32W x 81D x 36.5H in.  
Arm: 24.5H in. Seat: 18.5H in.  
Inside: 26.5W x 54D in.

**CS3170-75**  
Lanai Chaise Lounge  
Cushion Set  
Standard Feature: One 28 x 12" Kidney Pillow  
Shown in 7506-41 Gr. E, Welt on Seat  
and Back Cushion in 7400-41 Gr. E  
Optional Throw Pillow shown in 7601-41 Gr. H  
with Cord 500-41  
*Shown on Page 7*

## OCCASIONAL



**3170-920FG**  
Lanai Gas Fire Pit  
51W x 44D x 24.75H in.  
*Shown on Front Cover and Pages 20 and 21*



**3170-945WT**  
Weatherstone™ Top  
54W x 30D x 1.5H in.

**3170-945TB**  
Lanai Cocktail Table Base  
53W x 29.25D x 17.25H in.  
*Shown on Page 14*



**3170-953**  
Lanai Accent Table  
26W x 26D x 22.75H in.  
*Shown on Pages 14 and 15*



**3170-954**  
Lanai Tray End Table  
23.25 dia. x 23.5H in.  
*Shown on Pages 4, 9, 10, 11, 13, 14, 16 and 19*



**3170-945WT**  
Weatherstone™ Top  
54W x 30D x 1.5H in.

**3170-960ST**  
Travertine and Marble Top  
54W x 30D x 1.5H in.

**3170-960BB**  
Lanai Base for Bar  
47.5W x 19.5D x 34.5H in.  
*Shown on Pages 30 and 31*

## DINING



**3160-873WT**  
Weatherstone™ Top  
38 dia. x 1.5H in.

**3170-873BB**  
Lanai High/Low  
Bistro Table Base  
21W x 21D x 36-42H in.  
*Shown on Page 27*



**3160-873ST**  
Travertine and Marble Top  
38 dia. x 1.5H in.

**3170-873BB**  
Lanai High/Low  
Bistro Table Base  
21W x 21D x 36-42H in.



**3160-870WT**  
Weatherstone™ Top  
54 dia. x 1.5H in.

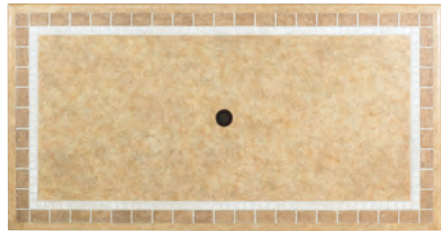
**3170-870TB**  
Lanai Table Base  
for 54 inch Dining Table  
22.75W x 22.75D x 27.25H in.  
*Shown on Pages 2, 29 and Back Cover*



**3160-870ST**  
Travertine and Marble Top  
54 dia. x 1.5H in.

**3170-870TB**  
Lanai Table Base  
for 54 inch Dining Table  
22.75W x 22.75D x 27.25H in.

# VISUAL INDEX



**3160-876WT**  
Weatherstone™ Top  
84W x 44D x 1.5H in.

**3170-876TB**  
Lanai Table Bases  
for 84 inch Dining Table  
(two -870TB)  
22.75W x 22.75D x 27.25H in. each  
Shown on Pages 22, 23 and 25



**3160-876ST**  
Travertine and Marble Top  
84W x 44D x 1.5H in.

**3170-876TB**  
Lanai Table Bases  
for 84 inch Dining Table  
(two -870TB)  
22.75W x 22.75D x 27.25H in. each



**3170-13**  
Lanai Dining Chair  
Frame Only  
25.5W x 28.5D x 40.5H in.  
Arm: 25.5H in. Seat: 19H in.  
Inside: 22.5W x 21.5D in.  
**CS3170-13**  
Lanai Dining Chair  
Cushion  
Shown in 7503-41 Gr. F  
Shown on Pages 23 and 25

Shown in 7607-31 Gr. F, Welt on Seat Cushion  
in 7408-31 Gr. A  
Shown on Pages 2, 29 and Back Cover



**3170-13SR**  
Lanai Swivel Rocker Dining Chair  
Frame Only  
25.5W x 28.5D x 40.5H in.  
Arm: 25.5H in. Seat: 19H in.  
Inside: 22.5W x 21.5D in.

**CS3170-13SR**  
Lanai Swivel Rocker Dining Chair  
Cushion  
Shown in 7503-41 Gr. F  
Shown on Pages 22, 23 and 24  
Shown in 7607-31 Gr. F, Welt on Seat Cushion  
in 7408-31 Gr. A  
Shown on Pages 2, 28, 29 and Back Cover



**3170-16SW**  
Lanai Swivel Bar Stool  
Frame Only  
23.5W x 25D x 48H in.  
Arm: 36H in. Seat: 31H in.  
Inside: 20.5W x 18D in.

**CS3170-16SW**  
Lanai Swivel Bar Stool  
Cushion  
Shown in 7501-31 Gr. F, Welt on Seat Cushion  
in 7408-31 Gr. A  
Shown on Page 26



**3170-17SW**  
Lanai Swivel Counter Stool  
Frame Only  
23.5W x 25D x 42.5H in.  
Arm: 31H in. Seat: 26.5H in.  
Inside: 20.5W x 18D in.

**CS3170-17SW**  
Lanai Swivel Counter Stool  
Cushion  
Shown in 7501-31 Gr. F, Welt on Seat Cushion  
in 7408-31 Gr. A  
Shown on Page 31

Shown in 7607-11 Gr. F, Cord (in lieu of welt)  
on seat cushion 500-41  
Shown on Pages 26 and 27



## THE FINEST MATERIALS

### ALUMINUM FRAMES

Tommy Bahama Outdoor Living frames are engineered for strength and built to last using endurance cast aluminum. Joints are precision-welded for strength and durability and then ground and polished by hand to ensure a smooth and seamless look.

### CUSTOM FINISHES

Finishes on Tommy Bahama Outdoor Living products are specially formulated, with custom base coats and painstaking handwork, to achieve a unique look. Ultra-durable polyester resin powder-coated finishes are baked on cast aluminum frames, ensuring that they are colorfast and highly resistant to damaging UV rays. Finishes are also corrosion and scratch resistant. The element that sets these designs apart is meticulous handwork using techniques like dry brushing, padding and burnishing that result in a product that is virtually indistinguishable from fine interior home furnishings, yet built to endure the elements.

### WEATHERSTONE TOPS™

The Weatherstone™ top is a man-made product that showcases the best attributes of natural stone, while offering exceptional durability. Tops are UV resistant, stain resistant and protected with a polyurethane sealant that significantly reduces the need for cleaning and maintenance. They are manufactured using a unique composite of fiberglass and concrete, making them extremely strong. All Tommy Bahama Weatherstone™ tops feature exclusive designs, textures and colors. Each top is finished by hand, with artisans recreating the natural character of stone on each top. Because they are hand-finished, no two are exactly alike.

### NATURAL TRAVERTINE AND MARBLE TOPS

The natural beauty of travertine and marble is unsurpassed in creating custom tabletop designs. Intricate patterns used in Tommy Bahama Outdoor Living incorporate three distinctive materials: Ivory Travertine from Spain, Suede Travertine from Central America, and Café Emperador Marble from Spain. The blending of geometric patterns and colors creates a striking design statement. The central field of the Tommy Bahama tabletop is crafted from Ivory Travertine in a classic parquet pattern. Suede Travertine is used around the soft rounded edge of the top, and mixed with the dark Café Emperador Marble in a geometric pattern that forms an elegant decorative boarder.

### ALL-WEATHER WICKER

Tommy Bahama all-weather wicker is crafted from the finest man-made materials and custom designed in exclusive colors, shapes, sizes and patterns to our exacting standards. It is entirely woven by hand, capturing the timeless and classic look of natural wicker or rattan, with exceptional durability. The material is made of high-density polyethylene, a recyclable material with great tensile strength. It is highly resistant to UV exposure, mildew, fading, staining, stretching and cracking. Tommy Bahama all-weather wicker is easy to maintain by cleaning with a mild solution of soap and water.

## PERFORMANCE FABRICS

Creating a seamless transition from an elegant interior décor to a stylish outdoor space is the essence of refined living today - and blurring the lines between indoor and outdoor living lies in merging beauty and durability. Fabrics must have the sophisticated look and luxurious hand of residential textiles, plus the performance technology to withstand the most extreme outdoor conditions.

The Tommy Bahama Outdoor Living program includes fabrics and trims from industry leaders in performance technology. A “performance fabric” is one with the following attributes:

- Fibers that are solution-dyed to the core, rather than simply on the surface
- Colorfast dyes that are highly resistant to fading from UV exposure
- Fibers that are inherently resistant to mold and mildew
- An extremely tight weave to withstand the wind and elements
- A durable finish for superior stain and water resistance

The Tommy Bahama Outdoor Living program is unique in the industry for its wide-ranging assortment of exceptional performance fabrics and correlating trims, offering the ability to customize upholstery whose impeccable tailoring, seating comfort and designer looks are equally at home, indoors or out.

## WEATHERGUARD™ UPHOLSTERY CUSHIONS

The exclusive Tommy Bahama Outdoor Living WeatherGuard™ cushion is engineered to be highly water resistant, mildew resistant and anti-microbial, while offering the most ultra-comfortable seating in the industry. In fact, the comfort is superior to the cushioning on most fine indoor upholstery. The unique construction consists of (4) distinct layers.

- The inner core is 1.8 lb. density, high-resiliency foam that provides unparalleled support, functioning like a box spring in premium bedding. It is both mold and mildew resistant.
- The second layer is soft-cell foam, designed to provide a relaxed but supportive seat, like a plush mattress.
- The third layer is spun polyester fiber, which is inherently anti-microbial and functions like a pillow-top, offering down-like comfort and a luxurious “crown” to the cushion.
- The fourth layer is a wrapping of water resistant non-woven ticking with a Tommy Bahama watermark to verify its authenticity. This ticking is thermally sealed to prevent water penetration into the layers below.

Seating comfort is one hallmark of the Tommy Bahama Outdoor Living program. The exclusive WeatherGuard™ cushion is your assurance that the quality, look and longevity of the cushioning will match its unsurpassed comfort.

## CARE AND MAINTENANCE & WARRANTY INFORMATION

Please see your authorized Tommy Bahama Outdoor Living dealer, or visit our website at [www.tommybahamaoutdoorliving.com](http://www.tommybahamaoutdoorliving.com)

### NOTE TO FURNITURE RETAILER:

Possession of this catalog does not necessarily constitute authority to purchase and the furnishing of this catalog does not constitute an offer by the Company to sell any of the items contained herein. Lexington Home Brands reserves the right to alter specifications or discontinue items at any time without advance notice. All price lists and catalogs remain the property of LHB, and may not be copied or in any way duplicated without the express written consent of LHB, and must be returned, or made available, without cost, to LHB promptly should our relationship be terminated by either party. Failure to observe this restriction may result in the termination of LHB’s relationship with the dealer or legal action or both.

### CONSTRUCTION NOTE:

In order to provide our customers with the best possible quality and/or value, this collection includes items or components produced outside the United States. All Lexington furniture is produced to Lexington design and material specifications and crafted to meet the highest quality standards.

I S L A N D  E S T A T E  
L A N A I

*Tommy Bahama*®  
**OUTDOOR LIVING**

[tommybahamaoutdoorliving.com](http://tommybahamaoutdoorliving.com)

ISLAND ESTATE  
LANAI



*Tommy Bahama*  
OUTDOOR LIVING

To purchase a Tommy Bahama Outdoor Living  
Island Estate Lanai catalog, or locate a retailer in your area,  
call 336.474.5444 or visit [tommybahamaoutdoorliving.com](http://tommybahamaoutdoorliving.com).